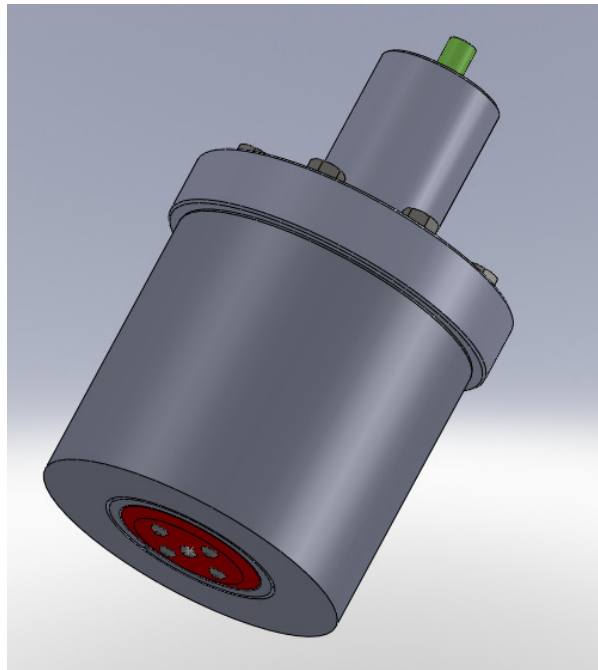




Installation manual for EML224SS- SC sensor mounting in an existing SAGEM tank



SKIPPER Electronics AS
Enebakkveien 150
P. O. Box 151, Manglerud
0612 Oslo, Norway
www.skipper.no

Telephone: +47 23 30 22 70
Telefax: +47 23 30 22 71
E-mail: support@skipper.no
Co. reg. no: NO-965378847-MVA

Document no: DI-E001-SS Rev: 1034A
Edition: 20100820

Weitergabe sowie vervielfältigung dieser unterlage, verwertung und mitteilung ihres inhaltes nicht gestattet, soweit nicht ausdrücklich zugestanden. Zuwiderhandlungen verpflichten zu schadenersatz.

Toute communication ou reproduction de ce document, toute exploitation ou communication de ou son contenu sont interdites, sauf autorisation expresse. Tout manquement à cette règle est illicite et expose son auteur au versement de dommages et intérêts.

Copying of this document, and giving it to others and the use or communication of contents thereof, are forbidden without express authority. Offenders are liable to the payment of damages.

Sin nuestra expresa autorización, queda terminantemente prohibida la reproducción total o parcial de este documento, así como su uso indebido y/o su exhibición o comunicación a terceros. De los infractores Se exigirá el correspondiente resarcimiento de daños y perjuicios.

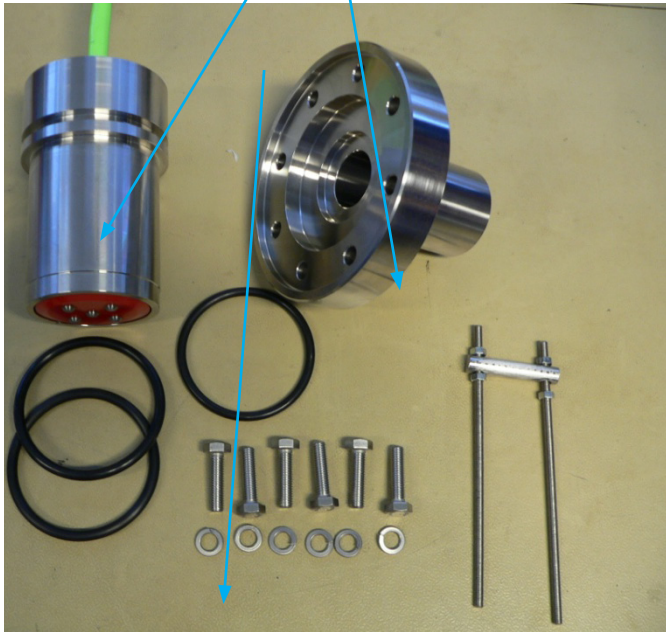
Contents

EML224SS-SC SENSOR MOUNTING IN AN EXISTING SAGEM TANK.	4
INSTALLATION INSTRUCTIONS	5
TO REMOVE A SKIPPER SENSOR ADAPTER	6
DIAGRAM DB-1056ASSEMBLY OF SAGEM EML ADAPTER	7
SAGEM ADAPTOR INSTALLATION	8
SAGEM TANK DIMENSIONS	8
ORIGINAL SAGEM SENSOR	9
ORIGINAL SAGEM TOP FLANGE	9
SAGEM CABLE PENETRATION METHODS	10

EML224SS-SC sensor mounting in an existing SAGEM tank.

This product contains:

No.	Part number	Description
1	DB-1057	EML224S Sensor premounted in a SAGEM adapter
2	DB-1053	Top adapter to work with SAGEM tank (Tank is assumed already in place on vessel)
3	INSTKITSAGEM	Installation kit containing: 1. O rings x3 2. Extra bolts and locking washers x8 3. Extraction tool



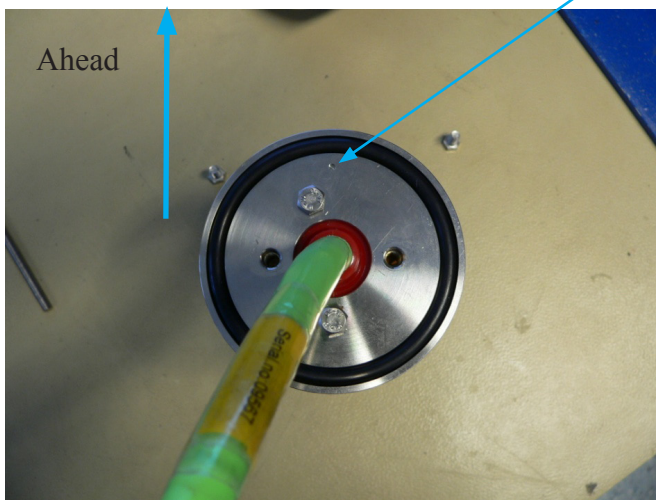
In addition you will need spanners to handle M5 and M8 bolts

Installation Instructions

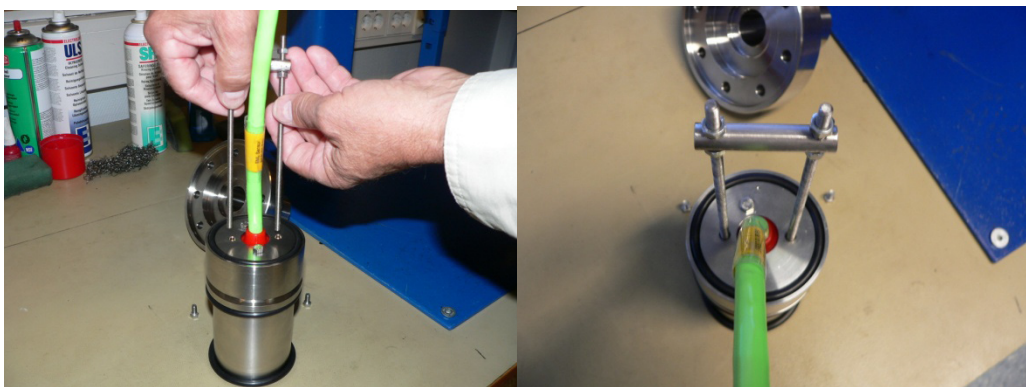
1. The SAGEM system allows removal of the sensor from the dry side. This is only if the wet side is blocked (using a diver). Once divers have verified the tank is sealed, you may remove the tank top, (8 Bolts, M8) and remove the sensor and tank top.
2. Ensure the tank top will fit to existing fittings. The screw fitting on the top of the tank has M22 thread. This will be dry after installation, but may need to be sealed to satisfy regulators.
3. Thread the smaller O-ring (65 x 4.5 mm) onto the cable and into the adapter.
4. Remove the cable and tank top / Sensor from the tank and thread the new sensor cable through.
Note: Remember to thread the new tank top part DB-1053 onto the cable first.
5. Replace the O-ring (69.2 x 5.7) in the base of the tank and thread the second O-ring onto the bottom of the sensor.



6. Place the sensor into the tank ensuring the small dot on the top of the sensor housing (DB-1057) is pointing ahead (as shown).



7. If alignment is difficult, remove the two M5 bolts to left and right of the ahead mark. Insert the tool as shown.



8. The Sensor can now be rotated or extracted using the tool.

Note: For correct alignment, the dot should be ahead and the tool port starboard.

9. Once satisfied with the alignment, remove the tool (if applied), and insert the two M5 Screws in its place.

10. Place the lock in place. This will squeeze the sensor housing in place.

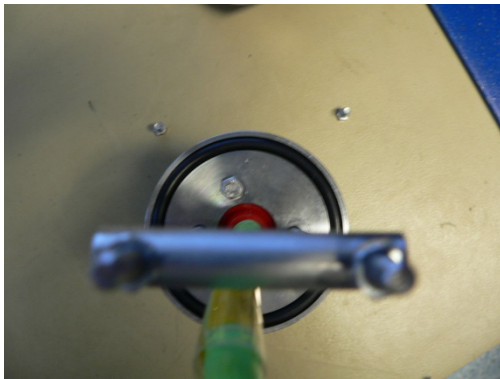
11. Screw tight all 8 M8 bolts.

12. Seal the top of the top plate as appropriate.

The sensor is now installed.

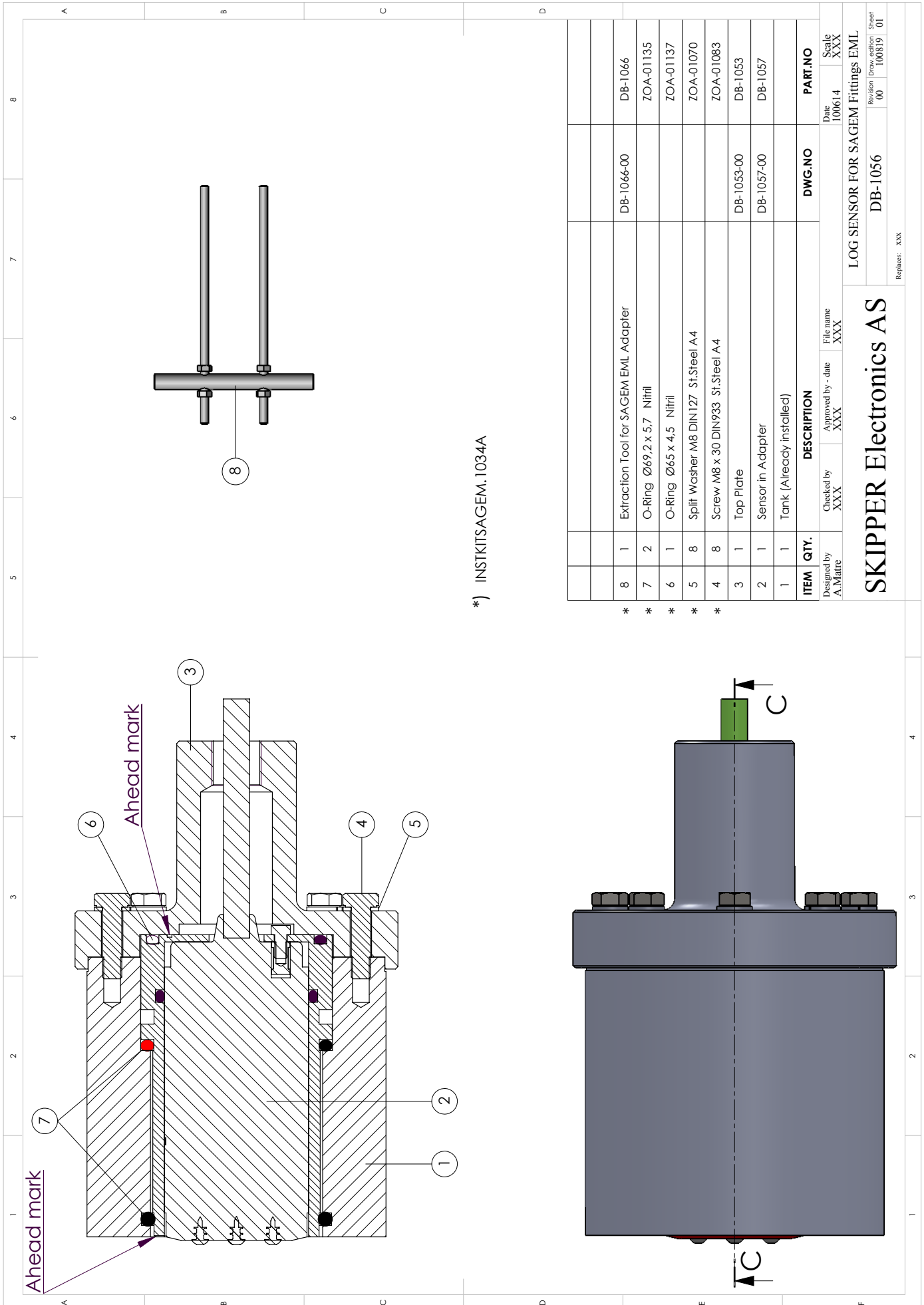
To Remove a SKIPPER sensor adapter

1. Ensure diver has sealed the wet side of the tank.
2. Unscrew the top plate and lift.
3. Unscrew the port /starboard M5 Bolts on the sensor housing.
4. Insert the Extraction tool.



5. Pull the sensor housing free.
6. Replace using the above instructions.

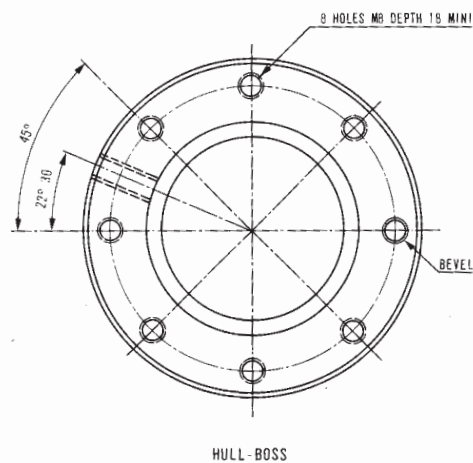
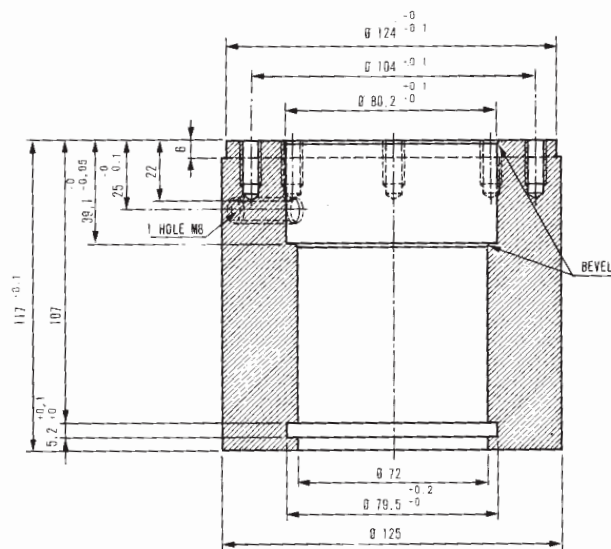
Diagram DB-1056 assembly of SAGEM EML adapter



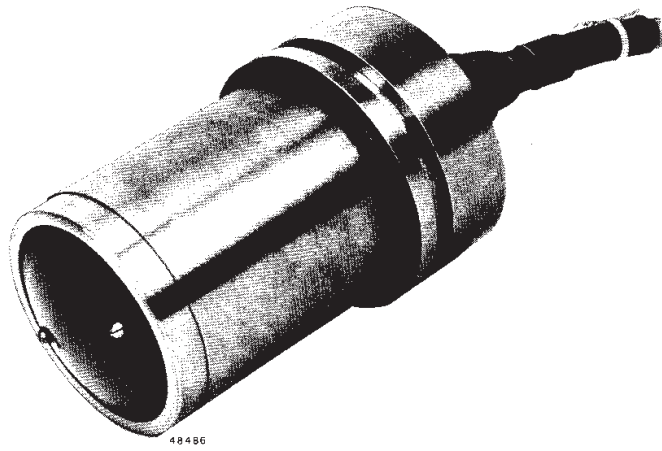
SAGEM adaptor installation



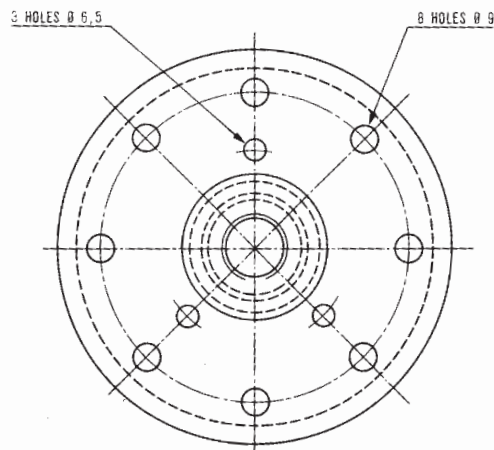
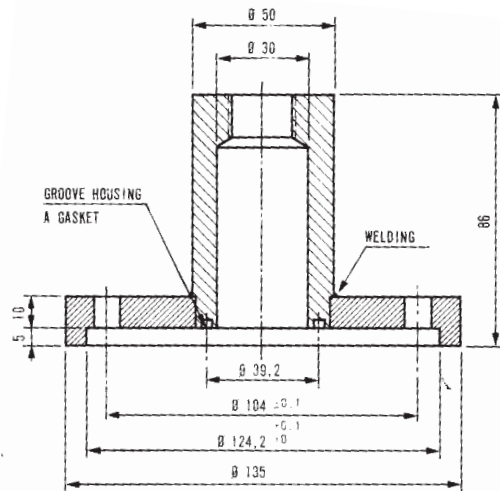
SAGEM tank dimensions



Original SAGEM sensor



Original SAGEM top flange



WATERTIGHT FLANGE LHS-BRE

SAGEM cable penetration methods

